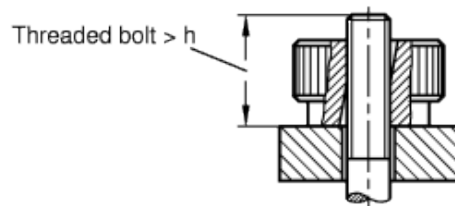
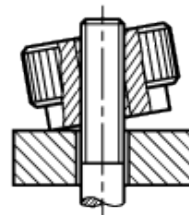
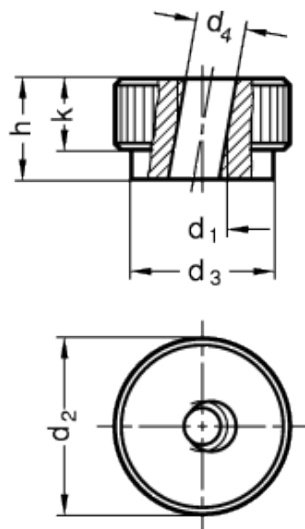


GN 6303.1

Quick-tightening knurled knobs



technical informations

Material

Black-oxide steel.

Assembly

Through and oblique hole, partially tapped.

Applications

GN 6303.1 knurled knobs are used when quick tightening is required and with only a slight clamping force.

Assembly instructions

The knob is placed in the axial position so that it fits onto the pin threads. At this point it can be locked with just a slight

rotation.

Standard Elements	Main dimensions			Mounting hole			Weight
Description	d_2	d_3	k	d_1	d_4	h	g
GN 6303.1-M5	20	14	8	M5	5.3	12	20
GN 6303.1-M6	24	16	10	M6	6.7	14	35
GN 6303.1-M8	30	20	12	M8	8.7	17	70
GN 6303.1-M10	36	20	14	M10	11	20	100
GN 6303.1-M12	40	32	16	M12	13	24	120



ELESA and GANTER models all rights reserved in accordance with the law. Always mention the source when reproducing our drawings.

STANDARD MACHINE ELEMENTS WORLDWIDE